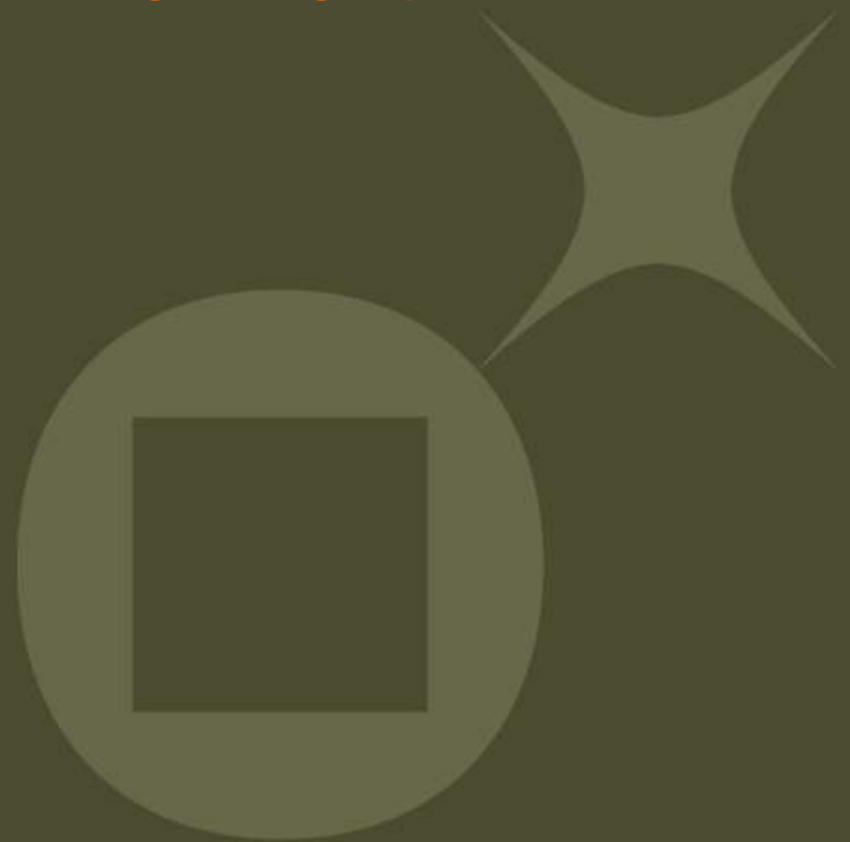


# VoIP client & demo environment

J.d'Annoville



# Agenda

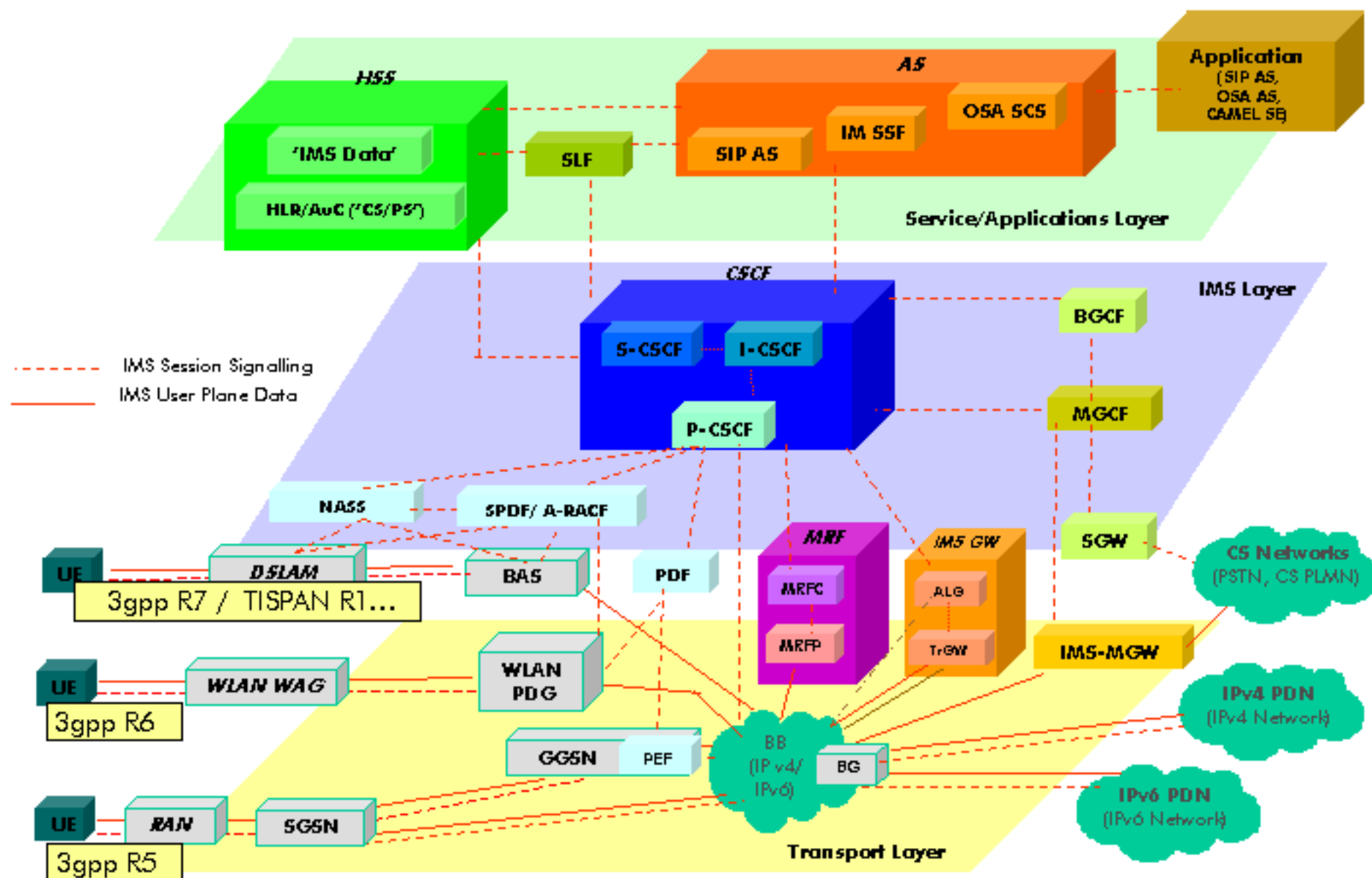
- ✦ Context
- ✦ IMS
- ✦ VoIP
- ✦ Server side
- ✦ Authentication flows
- ✦ Current status

# IP Multimedia Subscription - IMS

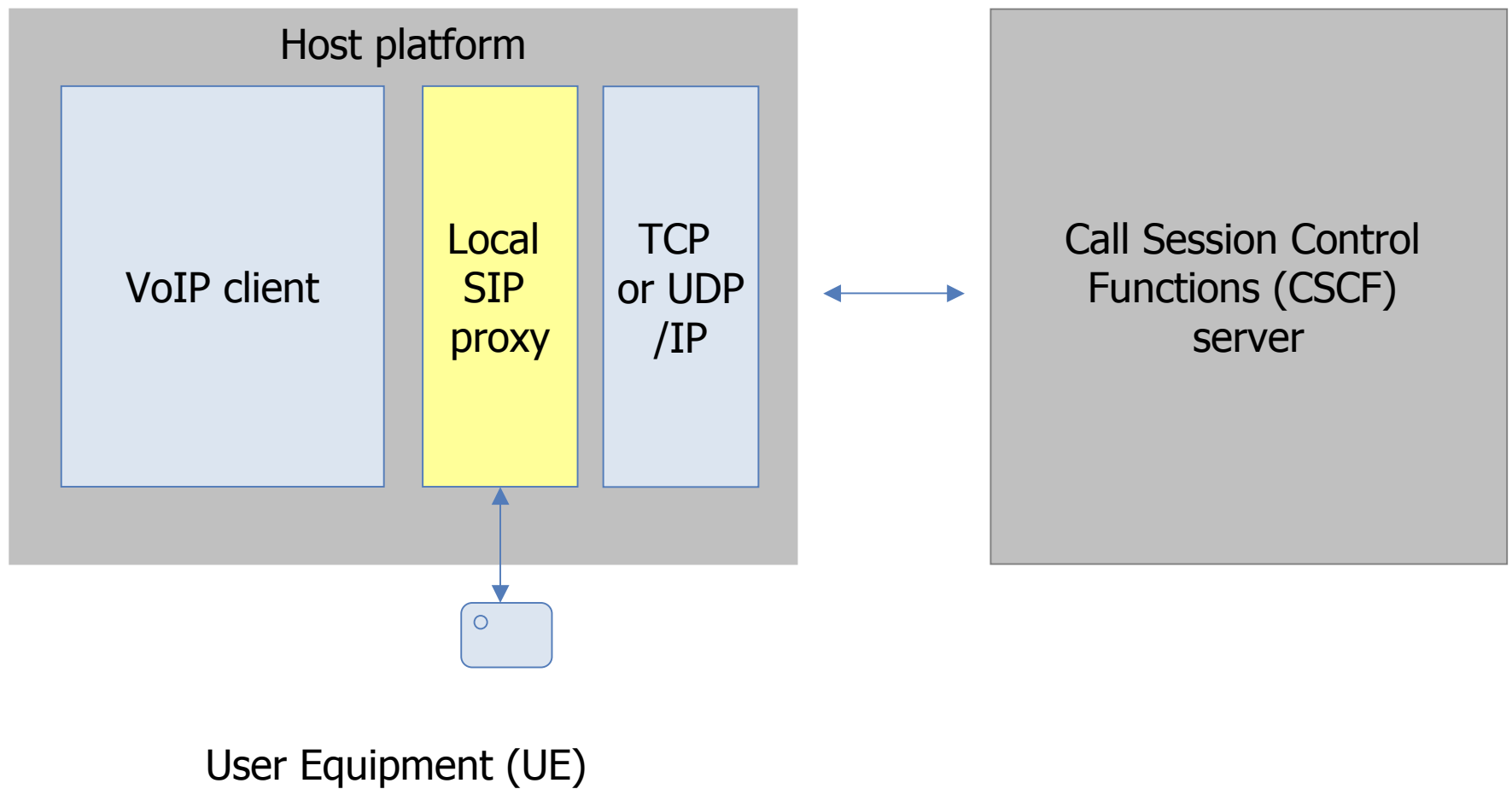
VoIP but not only...

- ★ Many applications (services)
  - Chatting applications (messaging)
  - PoC
  - Presence
  - Group management
  - Conferencing
- ★ IP based
  - Any IP connection
- ★ IP enabled devices
- ★ Peer-to-peer & peer-to-content connection

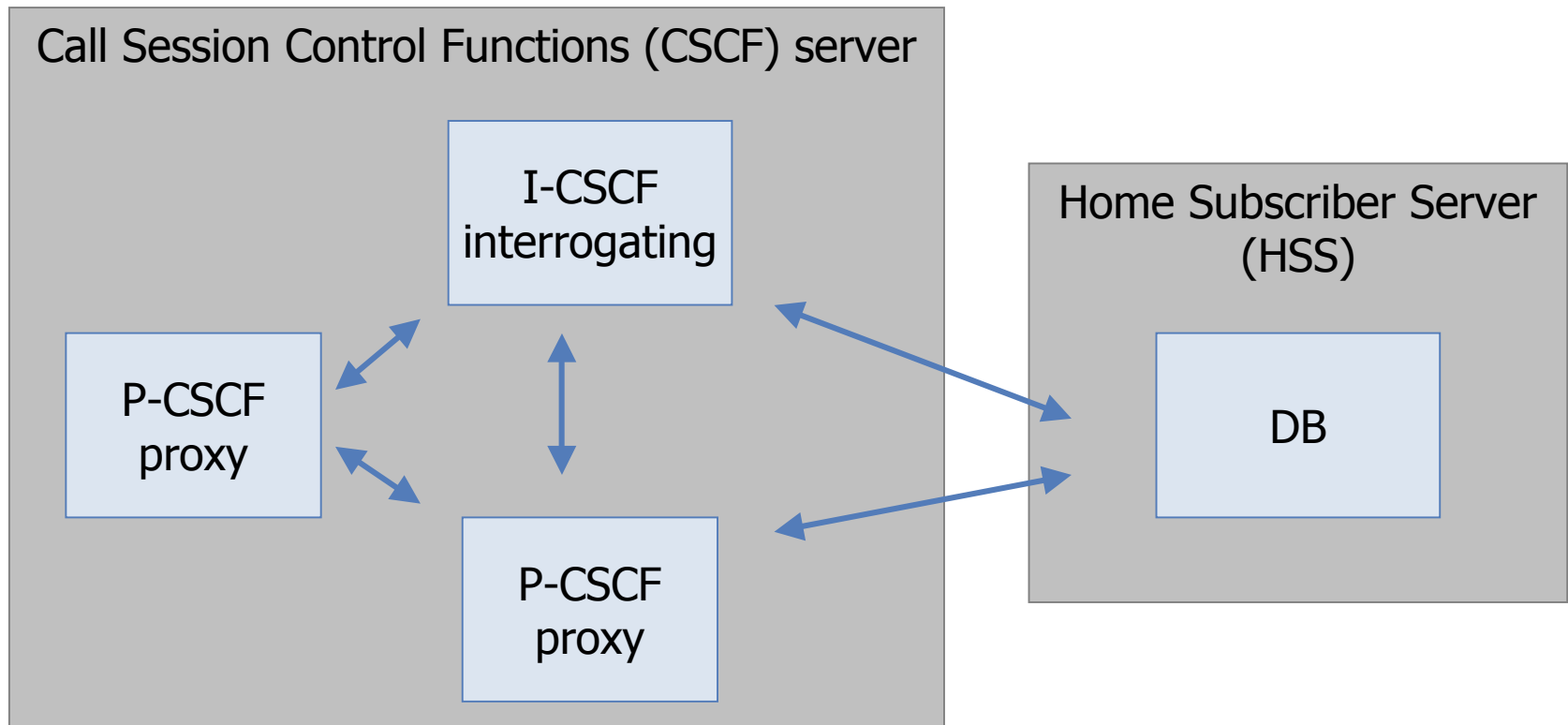
« IMS is a global, access-independent and standard-based connectivity and Service Control architecture that enables various type of multimedia services to end-users using common Internet based protocols »



# Voice over IP (VoIP)



## Server side (1/2)



# Server side (2/2)

## Processing split between three components

### ★ Proxy (P-CSCF)

- Compression
- IPsec
- Emergency calls
- Police Decision Function (PDF)

### ★ Interrogating (I-CSCF)

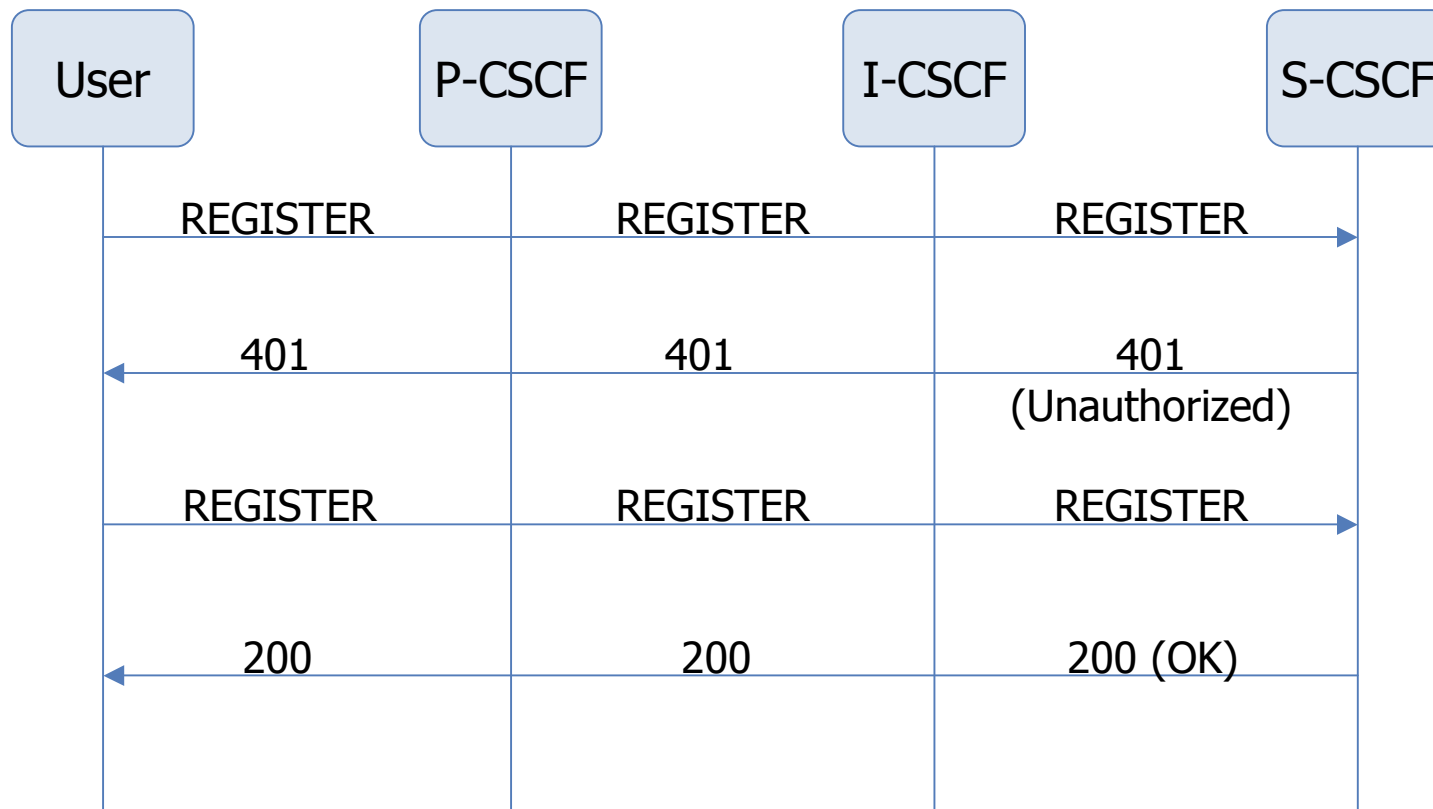
- Next hop from HSS: either S-CSCF or Application server (AS)
- Assign S-CSCF
- Route request to S-CSCF or AS
- Provides Topology Hiding Inter-Network (THIG)

### ★ Server (S-CSCF)

- Registration
- Routing decision
- Maintain session states
- Store service profiles

# Session Initiation Protocol (SIP)

## Authentication flows during registration





# Current status

## ✦ Local SIP proxy

- Used with various VoIP clients
- AKAv1-MD5 (= 3GPP AKA ) supported thanks to the ISIM smart card
- No NAT
- IPsec not supported so far

## ✦ CSCF server

- Run in a VMWare
- Able to make a call between two VoIP clients/PC
- No GSM or PSTN gateways

Questions/Answers ?

Thank you !